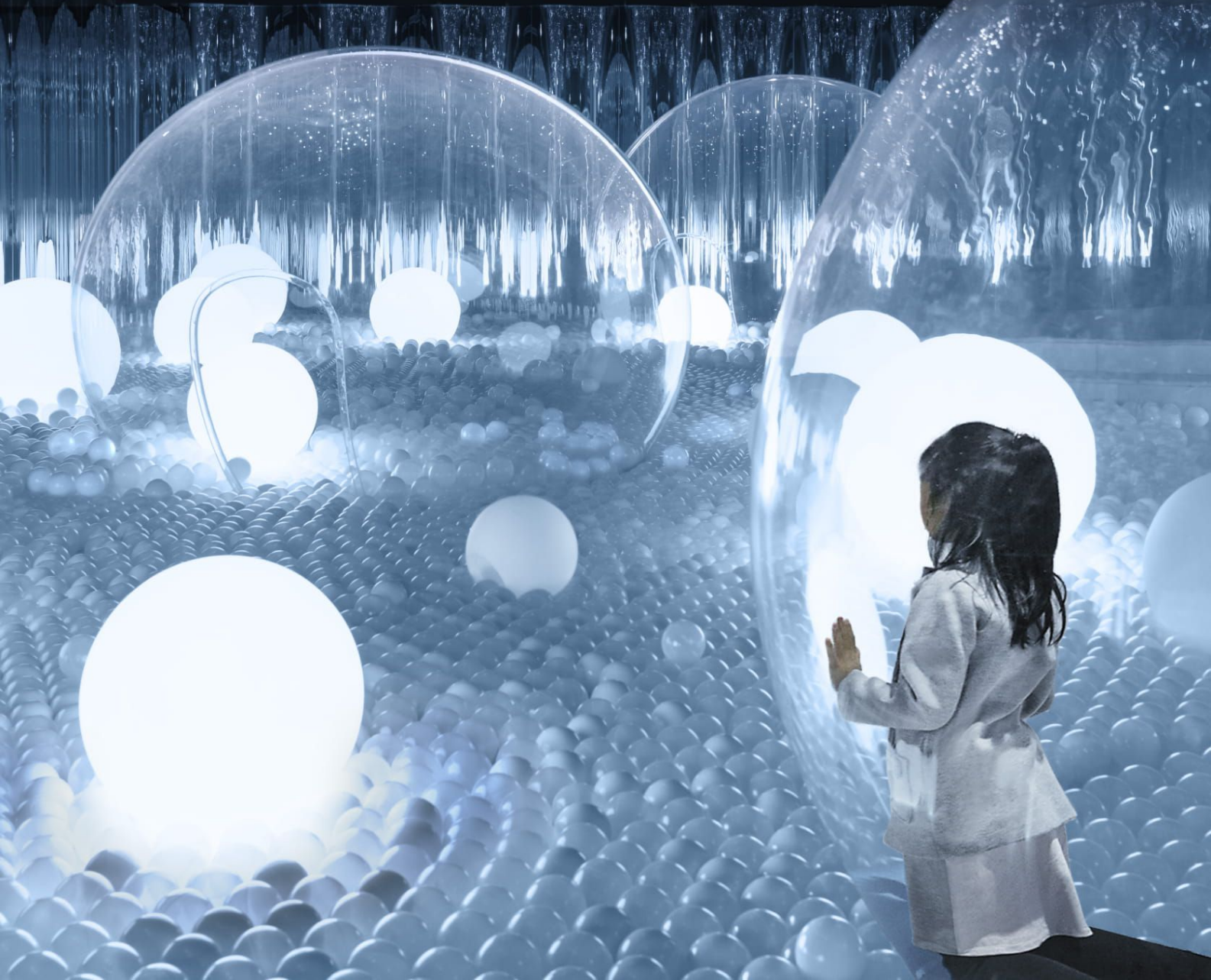


# INTERIOR DESIGN<sup>®</sup>

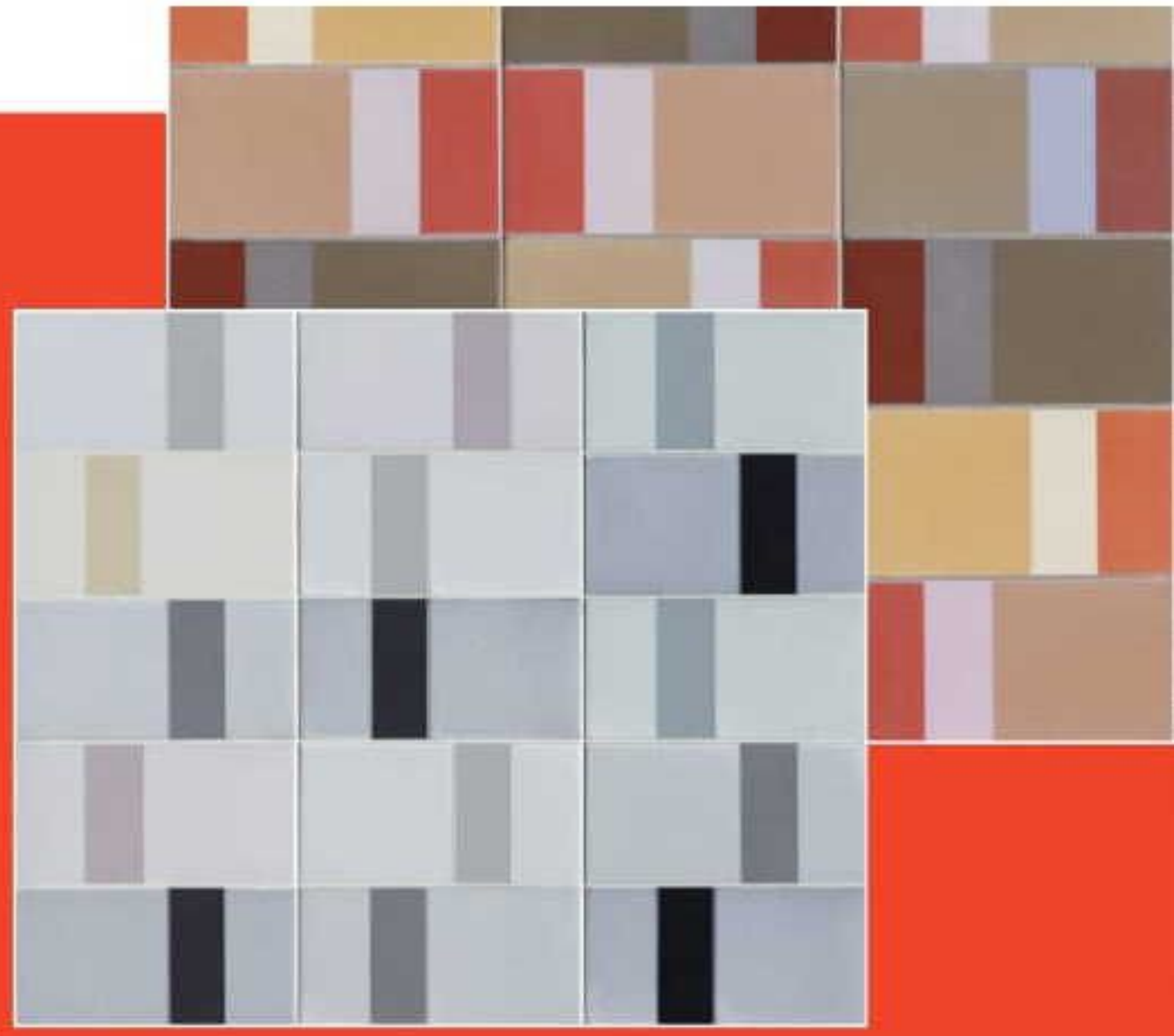
JULY  
2018

out of this world





1 2  
4 3



**MARKETSCAPE**  
kitchen and bath



**Daniel Libeskind**  
for **Azzurra**

**product** Hera.  
**standout** Studio Libeskind's principal architect looked to the fluid lines of neoclassical sculptures for fixtures in vitreous china or fire-clay. [azzurraceramica.com](http://azzurraceramica.com)



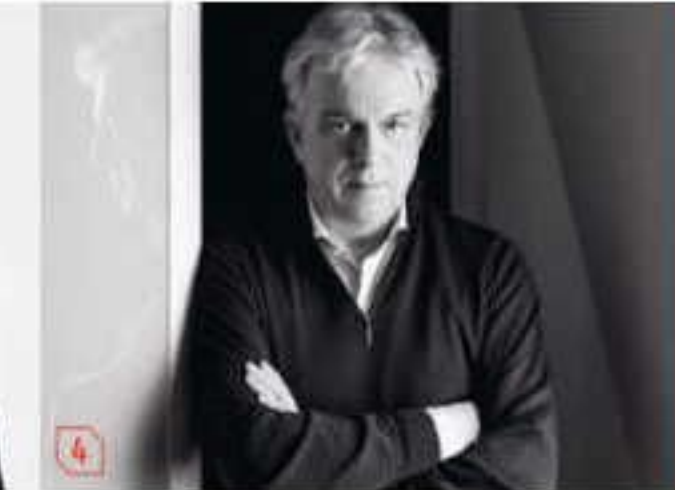
**Hella Jongerius**  
for **Mutina**

**product** Diarama.  
**standout** Jongeriuslab's founder applied the same glaze to different colored clay bases for chromatic tiles inspired by oil paintings. [mutina.it](http://mutina.it)



**Konstantin Grcic**  
for **Laufen**

**product** Val.  
**standout** The sink's slim edges come from a strong proprietary material that blends ceramic with corundum, a mineral component of sapphires. [us.laufen.com](http://us.laufen.com)



**Marco Piva**  
for **Kreoo**

**product** Roma.  
**standout** Carved lines evoking classical Roman columns lead the eye up the striated onyx pedestal to a cavernous, equally patterned basin. [kreoo.com](http://kreoo.com)